	<h2 style="text-align: center;">Installing Drivers for Windows Vista</h2>	<p style="text-align: right;"><b>Customer Application Note</b> CAN-0044</p>
<b>Engineering:</b> C.E <b>Revision:</b> A	<b>Products:</b> APEX Printers	<b>Date:</b> 03/02/2009 <b>Page:</b> 1 of 7

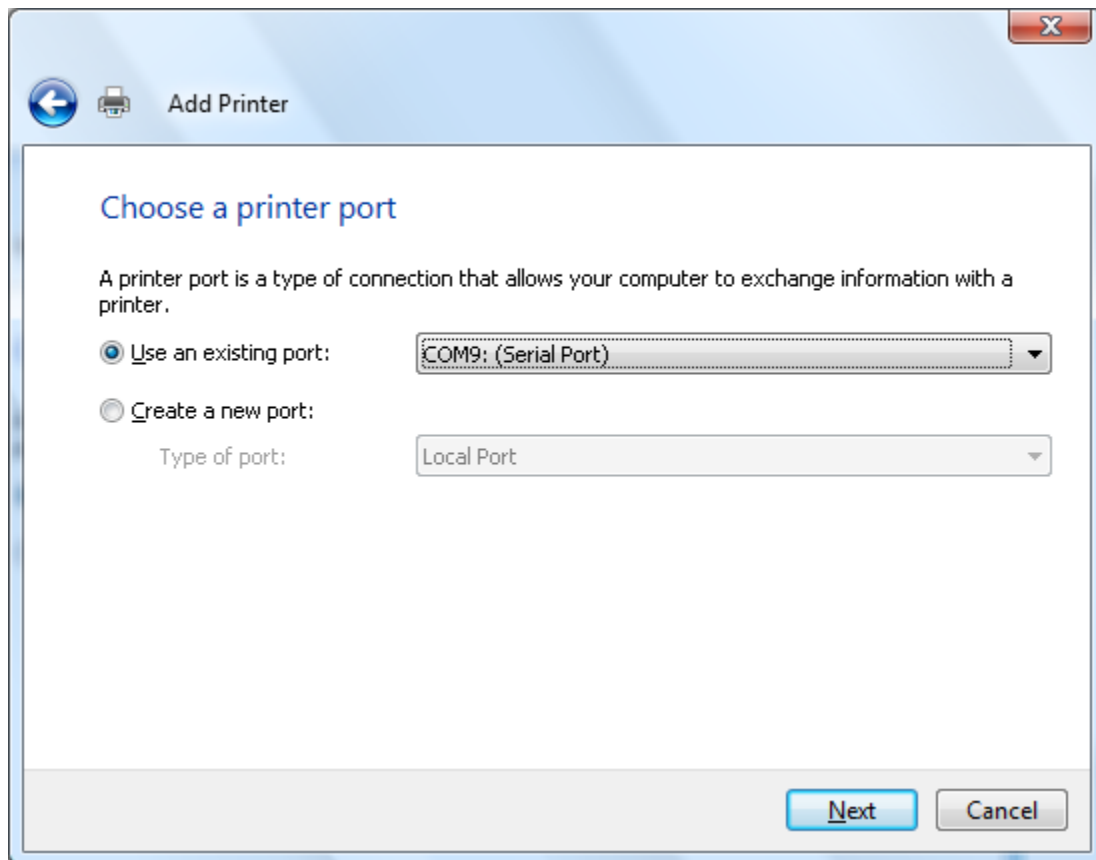
## Requirements

*Computer Windows Vista*


*Apex Windows Driver*

## Procedure

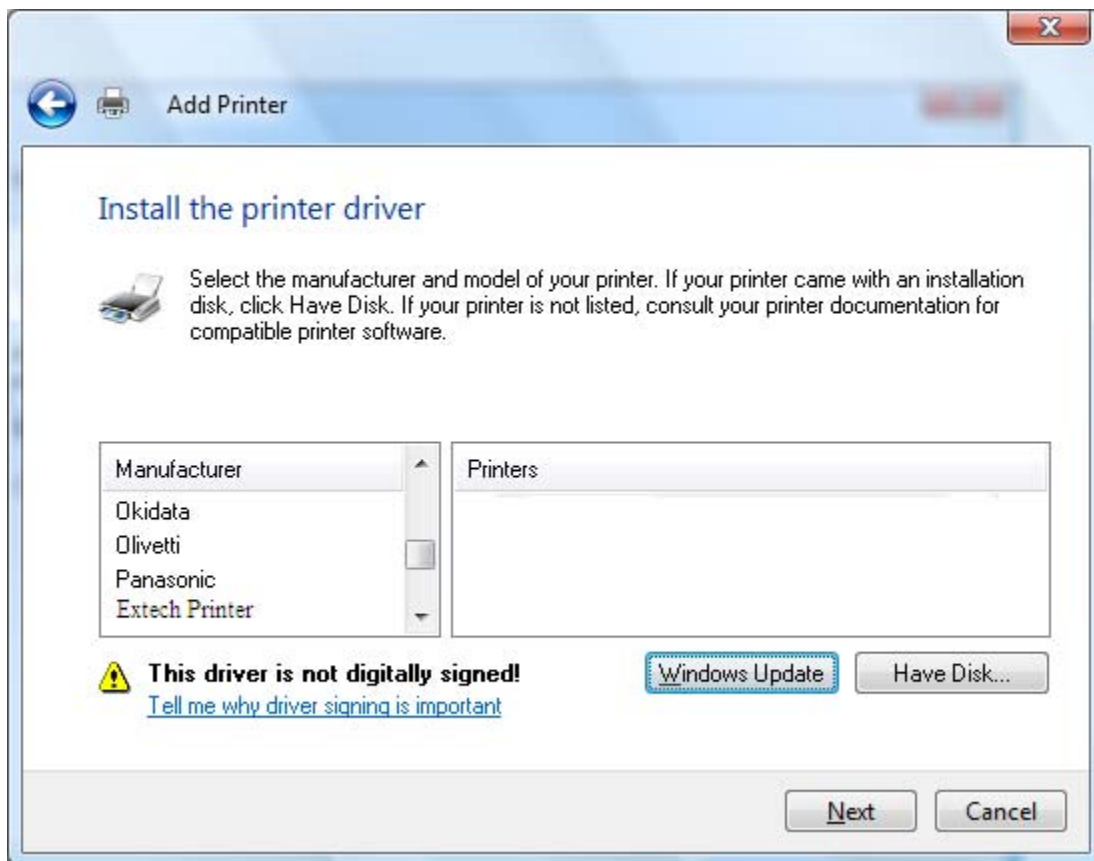
1. Go to Windows\Control Panel\Printers and choose the option "Add Printer". See Image Below




***“Make Mine an Extech!™”***

	<h2 style="text-align: center;">Installing Drivers for Windows Vista</h2>	<p style="text-align: right;"><b>Customer Application Note</b> CAN-0044</p>
<b>Engineering:</b> C.E <b>Revision:</b> A	<b>Products:</b> APEX Printers	<b>Date:</b> 03/02/2009 <b>Page:</b> 2 of 7

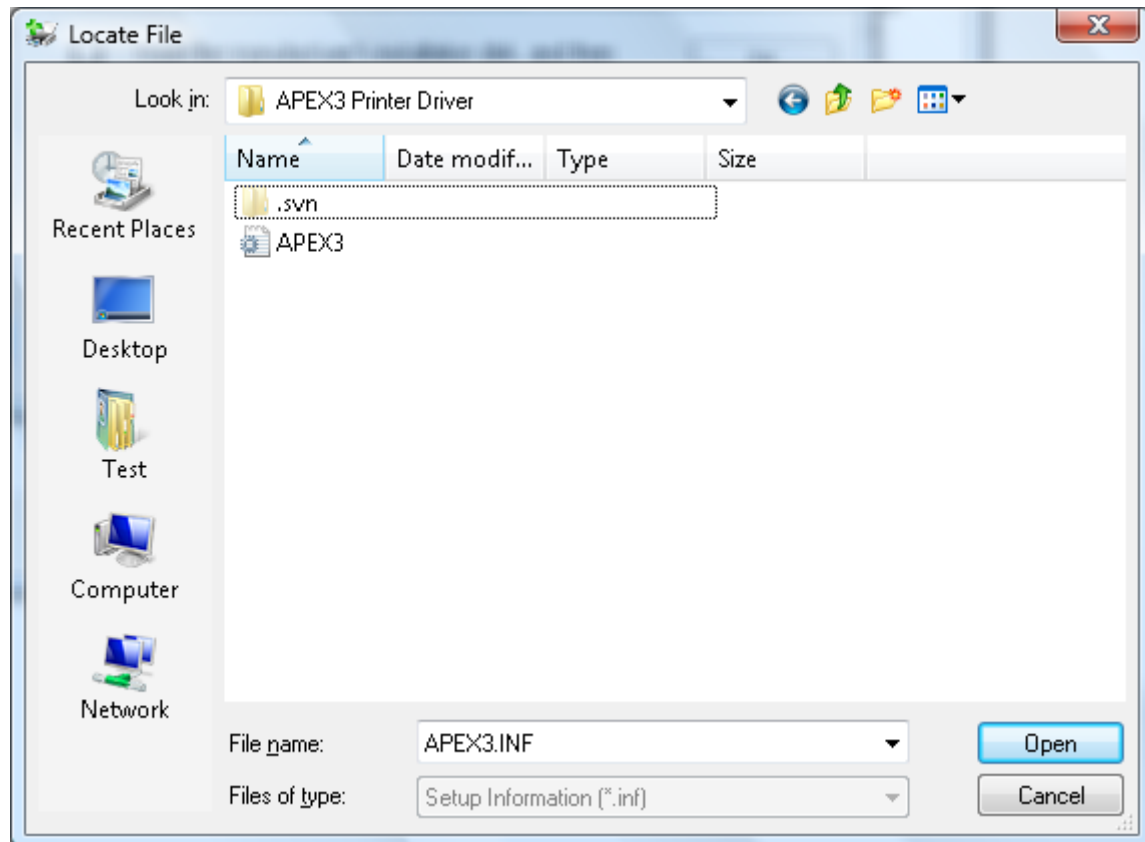
2. Select the "Have Disk" option as shown below.




***“Make Mine an Extech!™”***

	<h1>Installing Drivers for Windows Vista</h1>	<p align="right"><b>Customer Application Note</b> CAN-0044</p>
<p><b>Engineering:</b> C.E <b>Revision:</b> A</p>	<p><b>Products:</b> APEX Printers</p>	<p><b>Date:</b> 03/02/2009 <b>Page:</b> 3 of 7</p>

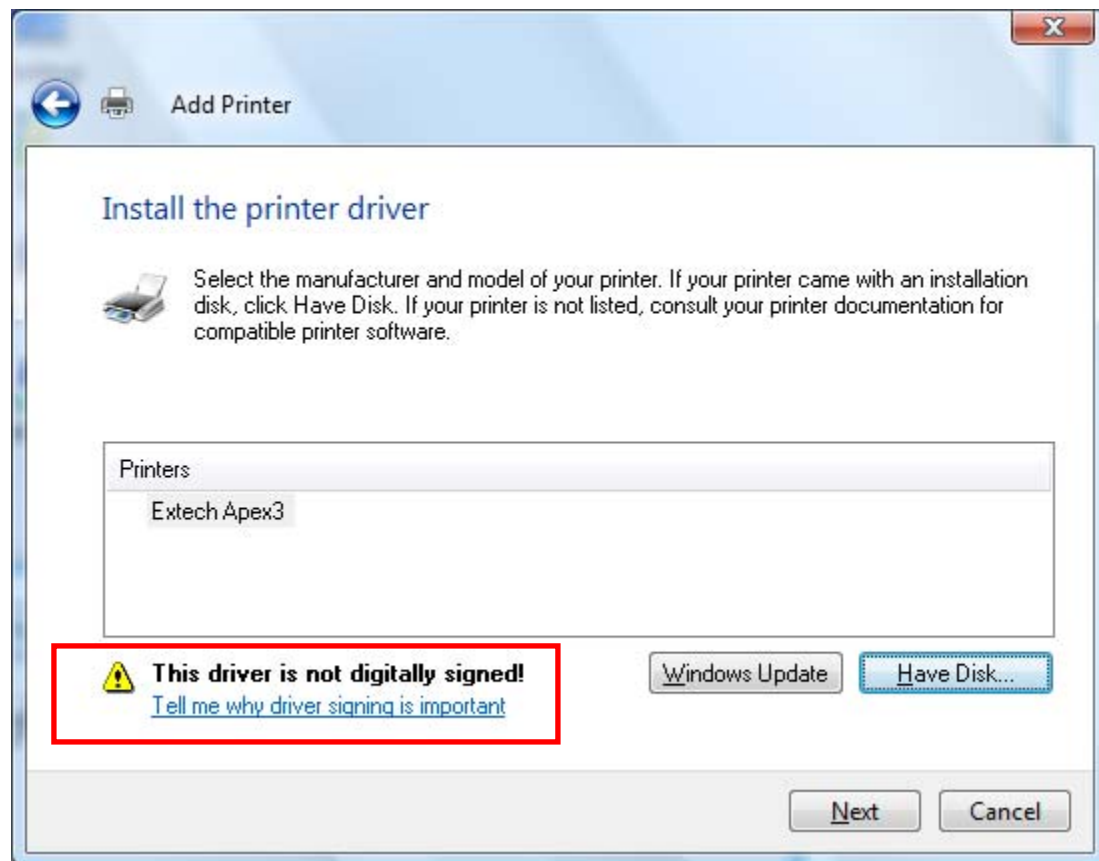
3. Select the folder where the Drivers are located and then select the file "APEX3.inf". See image below.




***“Make Mine an Extech!™”***

	<h2 style="text-align: center;">Installing Drivers for Windows Vista</h2>	<p style="text-align: right;"><b>Customer Application Note</b> CAN-0044</p>
<p><b>Engineering:</b> C.E <b>Revision:</b> A</p>	<p><b>Products:</b> APEX Printers</p>	<p><b>Date:</b> 03/02/2009 <b>Page:</b> 4 of 7</p>

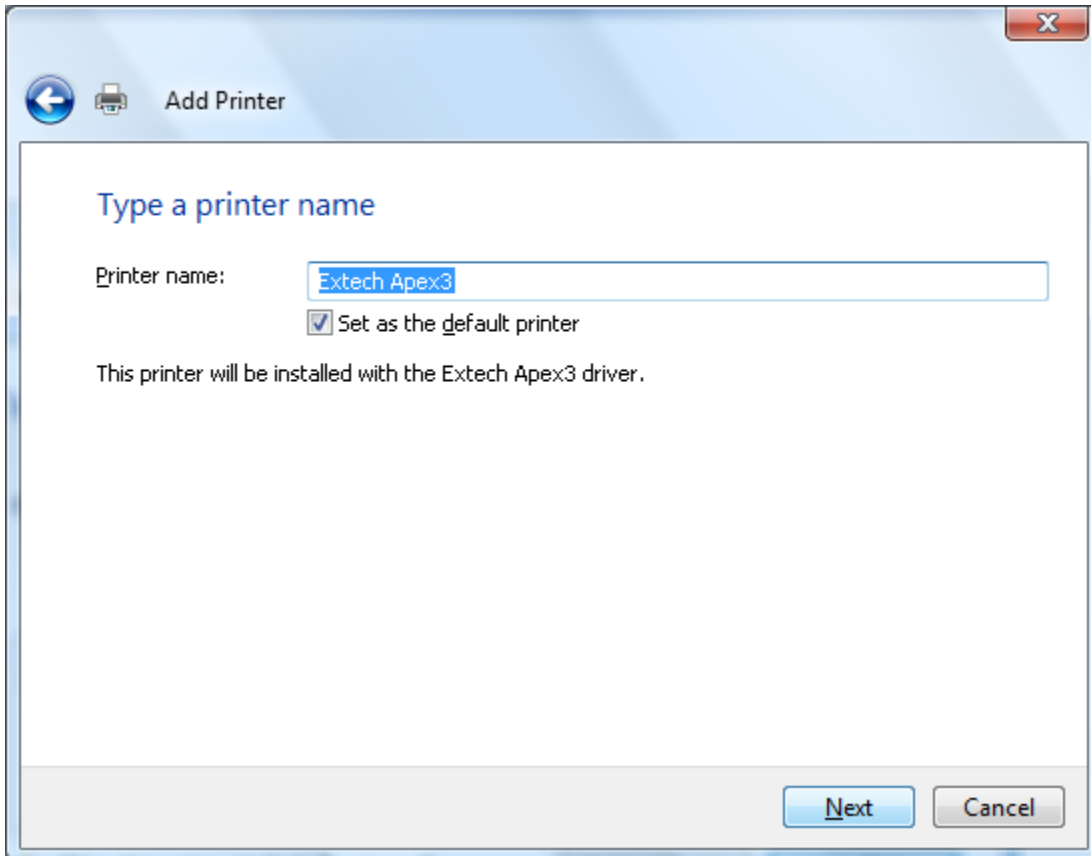
- Select the button "Next" to continue with the installation. Note that the message "This Driver is not digitally signed" shows up, just select "Next" button.



***“Make Mine an Extech!™”***

	<h2 style="text-align: center;">Installing Drivers for Windows Vista</h2>	<p style="text-align: right;"><b>Customer Application Note</b> CAN-0044</p>
<b>Engineering:</b> C.E <b>Revision:</b> A	<b>Products:</b> APEX Printers	<b>Date:</b> 03/02/2009 <b>Page:</b> 5 of 7

5. Change the name of the printer if desired, and then select the button "Next".



← Add Printer

Type a printer name


Printer name:

☒ Set as the default printer

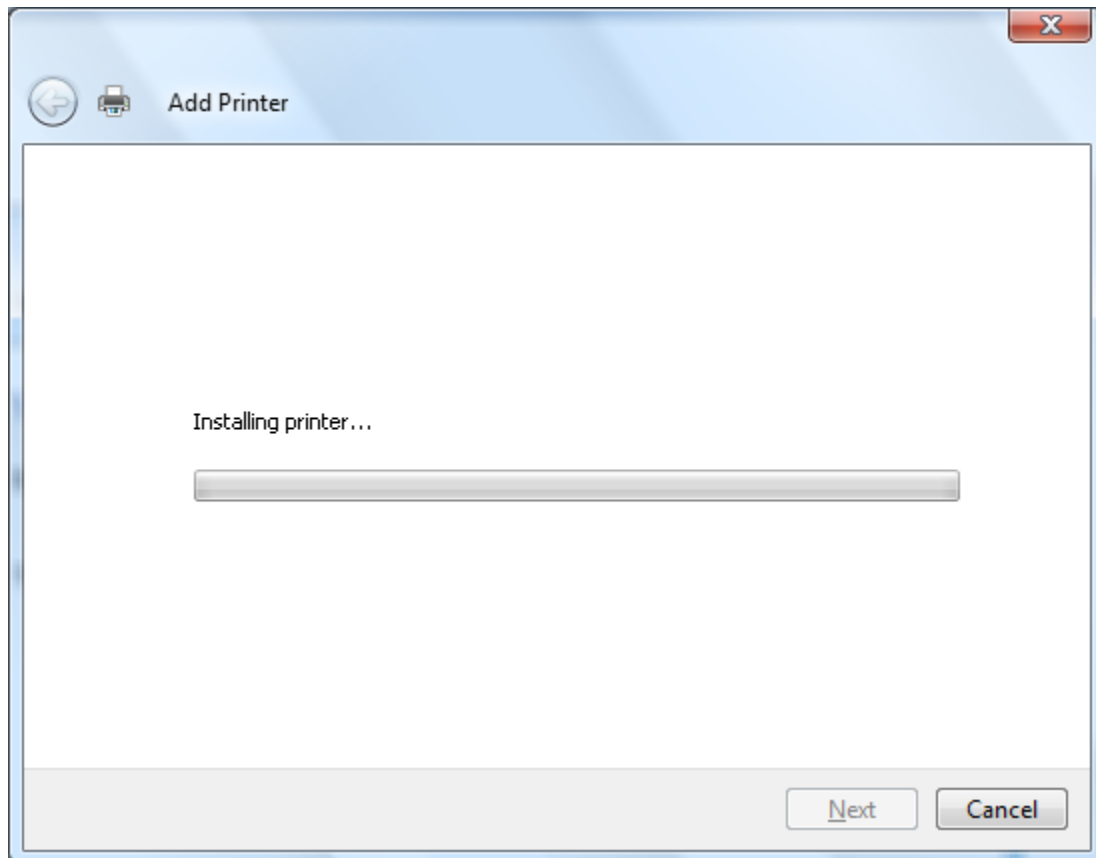
This printer will be installed with the Extech Apex3 driver.

Next Cancel

***“Make Mine an Extech!™”***


	<p align="center"><b>Installing Drivers for Windows Vista</b></p>	<p align="right"><b>Customer Application Note</b> CAN-0044</p>
<p><b>Engineering:</b> C.E <b>Revision:</b> A</p>	<p><b>Products:</b> APEX Printers</p>	<p><b>Date:</b> 03/02/2009 <b>Page:</b> 6 of 7</p>

6. The following screen is shown while the driver is being installed.

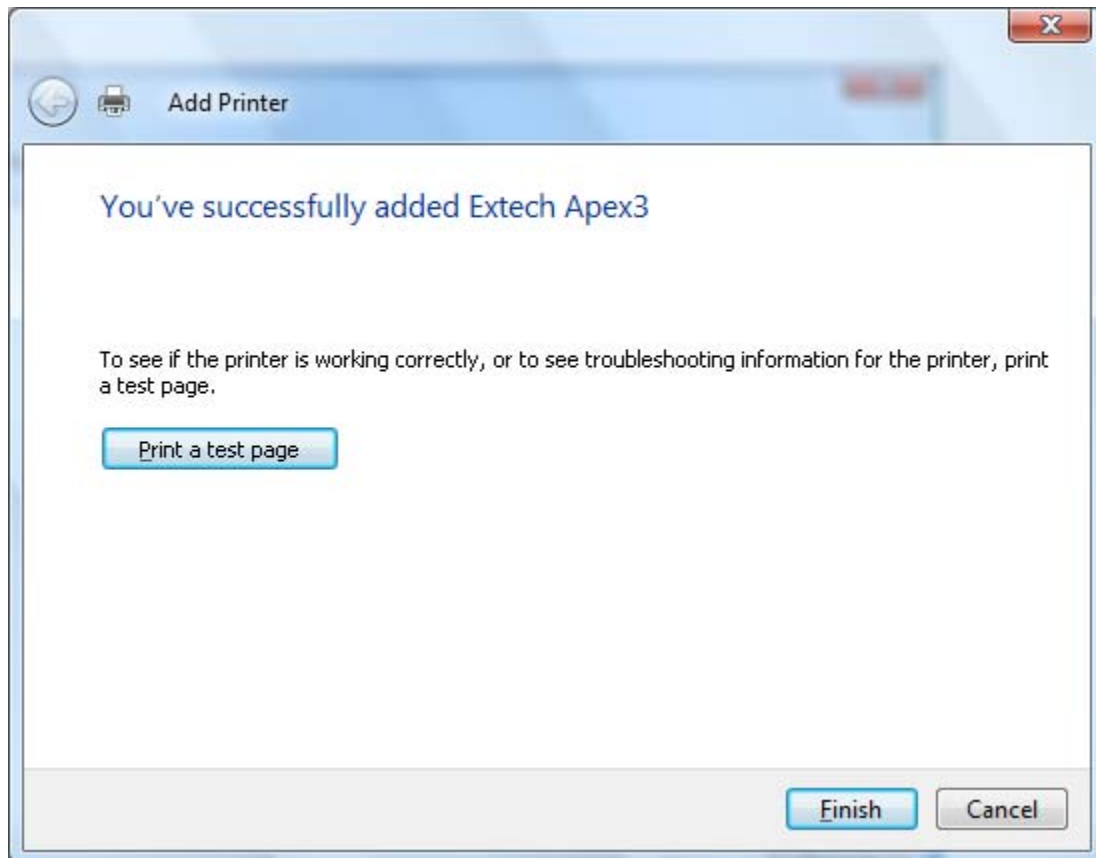


***“Make Mine an Extech!™”***

Extech Instruments Corporation • 285 Bear Hill Road • Waltham, MA 02451-1064 USA  
Tel: 1-781-890-7440 • Fax: 1-781-890-7864 • E-mail: [printers@extech.com](mailto:printers@extech.com) • [www.extech.com](http://www.extech.com)

	<h1>Installing Drivers for Windows Vista</h1>	<p align="right"><b>Customer Application Note</b> CAN-0044</p>
<p><b>Engineering:</b> C.E <b>Revision:</b> A</p>	<p><b>Products:</b> APEX Printers</p>	<p><b>Date:</b> 03/02/2009 <b>Page:</b> 7 of 7</p>

7. After the driver has been successfully installed, the following screen will be shown.



***“Make Mine an Extech!™”***