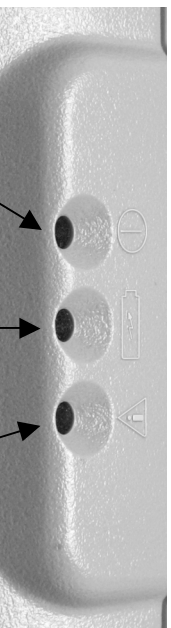


## Status Indicator LED's

Press ON/OFF button to turn printer on. Three LED indicators located on the top of the printer indicate various printer functions. LED will indicate function as described below:

LED	State	Status
LED #1	Green	If the LED's Color is Green it indicates that Power is ON and that the printer is in RS232 or IrDA mode
	Orange/Purple	If the LED is Purple it indicates that the printer's power is low in BT mode and if it is Orange it indicates that the printer's battery is low when the printer is in RS232 mode.
	Blue	If the LED's Color is Blue it indicates that Power is ON and that the printer is in Bluetooth mode
LED #2	Yellow	The battery charger is charging the battery at a fast rate. If the battery is below 5V, the battery is being "trickle" charged until the battery voltage reaches 5V, and then the fast charge rate is started. The LED will turn off when the battery is fully charged.
LED #3	Green	<ul style="list-style-type: none"> <li>Indicates that MCR is ready to accept data.</li> <li>Indicates that SCR is ready to accept data.</li> </ul>
	Red	<ul style="list-style-type: none"> <li>Indicates a fault condition or a printer error. The printer is not ready to accept data.</li> <li>Printer is out-of-paper</li> </ul> <p><b>Note:</b> Refer to the troubleshooting guide to determine error or fault condition.</p>



## Performing Self Test

1. Turn off printer
2. Press and Hold Paper Feed Button
3. While holding Paper Feed Button, press On/Off Button

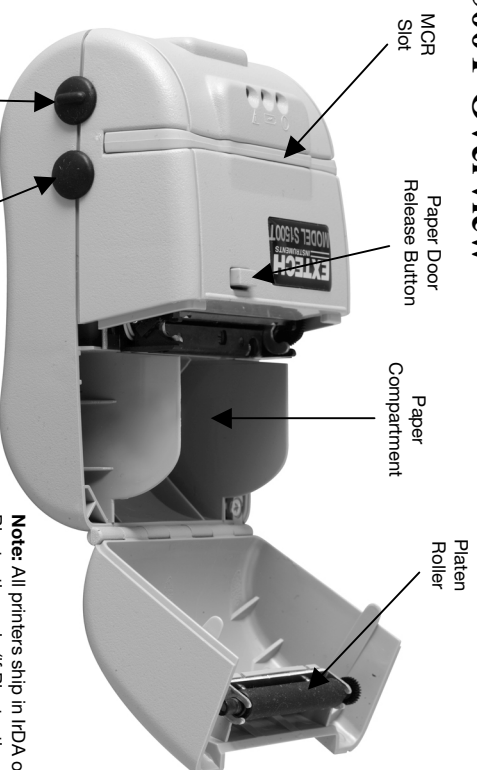
## Model S1500T Mobile Printer

# EXTTECH<sup>®</sup> INSTRUMENTS

### Quick Start Guide

*This guide provides a reference illustration of the initial steps to quickly get your Model S1500T up and running. Refer to the User's Guide for more detailed information on the operation and use of Model S1500T. A copy of User's Guide can be downloaded from [www.extech.com/printers](http://www.extech.com/printers)*

## S1500T Overview



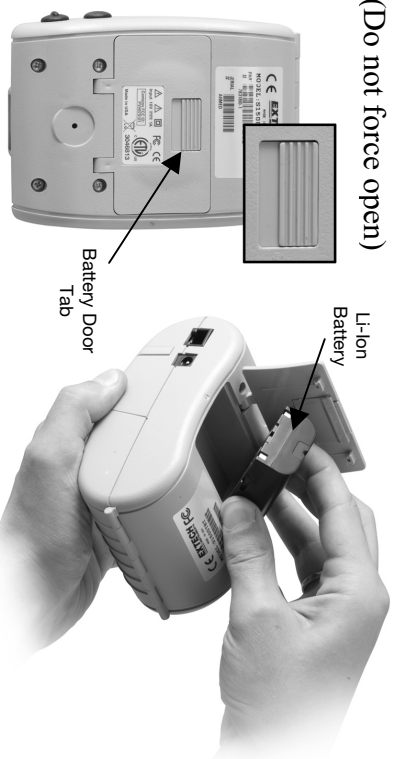
**Note:** All printers ship in IrDA or Bluetooth mode (if Bluetooth option is ordered). To switch to Serial mode, please check the User Guide for set-up instructions



## Installing the Battery

1. Unlock the battery door by sliding the locking tab down.
2. Open the battery door to an angle of about 90 degrees.

(Do not force open)



**Note:** Ensure that battery side with 2 contact terminals are facing down to make contact with the spring probes inside the battery compartment

3. Insert battery as shown (non-contact end first and let the contact end drop into place).
4. Close the battery door and lock battery door by sliding the locking tab up.

## Charging the Battery

1. Plug battery charger adaptor cable into the battery charger connector.
2. Plug battery charger adaptor into the appropriate AC line voltage socket.
3. LED will illuminate indicating that the battery is being charged.
4. The battery will be fast charged and after 180 minutes the LED will turn off.



## Installing the Paper Roll

1. Press Paper Door Release button. The door will open slightly. Open rest of the way as shown.

**Note:** Paper Door Release button must be depressed when opening and closing paper door.



## 2. Install Paper Roll



**Note:** Pull Paper Roll Leader Out of Printer. Note Direction of Paper Travel.

3. While pressing Paper Door Release button, close paper door.
4. Press paper door down and let go of Paper Door Release button.
5. Turn on the printer by pressing Power button and test the paper advance function by pressing the Paper Feed button. Verify that paper advances correctly.

## Tearing Paper

The printer's paper door acts as tear bar. To tear paper pull one edge of the paper against the tear bar as shown, then tear down and across against the tear bar to tear the paper.



**Note:** Pulling paper up and/or sideways without using the tear bar can cause a paper jam due to paper misalignment in printhead mechanism.